



Volume 7, Number 6

June 2023

The NMRA's *Turntable* is a monthly publication which, like a railroad turntable, will lead you in several directions on the internet.

This e-publication is a collection of railroad and model railroad videos, podcasts, websites, and/or other information freely available on the internet that we think may be of interest to you. The NMRA claims no ownership of this information, nor do we endorse its creators or their websites. The *NMRA Turntable* will not promote individuals or their for-profit ventures.

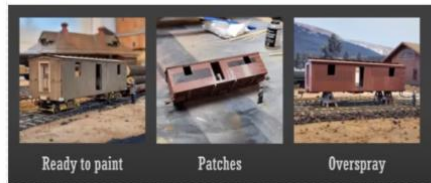
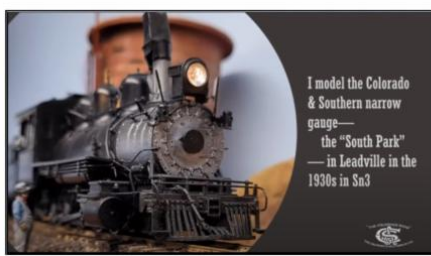
Free-Standing, Dual-Deck Benchwork



[Dual-Deck Benchwork](#)

An interesting idea to create double-decked benchwork for a model railroad. The concept shown in the video provides places to mount a backdrop, an upper valance to hide lighting, and a lower fascia, all within one portable modular unit.

Keith Hayes - Painting Using Techniques of Military Modelers



Painting Techniques

Keith Hayes shares his experience with the techniques and materials military modelers use to achieve outstanding results in painting and weathering buildings and rolling stock. Keith has a layout featuring the Colorado & Southern in and around Leadville, Colorado.

Centerline: The Surprising History of Lane Markings on Roads



Lane Markings on Roads

Using a line painted down the center of a road to denote lanes seems to be merely common sense. But it was an innovation that took a surprising amount of time to develop. The history of lane markings is a study in the rapid effect of new technologies, and the ability of a few people with a good idea to have a large impact. The History Guy remembers the surprising history of lane markings.

(Editor's Note: Pay particular attention to the colors used, in some states in the past a double WHITE line was used where a double YELLOW line is used today! Also, sometimes both colors were used together for some lane markings. PVV)

Switching on a Shelf Layout

**The
Des Moines Transfer Rly.
Presents:
MILWAUKEE ROAD
transfer to the
Des Moines Transfer Rly's.
E-18th St. Yard**



The DMT yard engine is in the clear in the yard, OK to keep coming



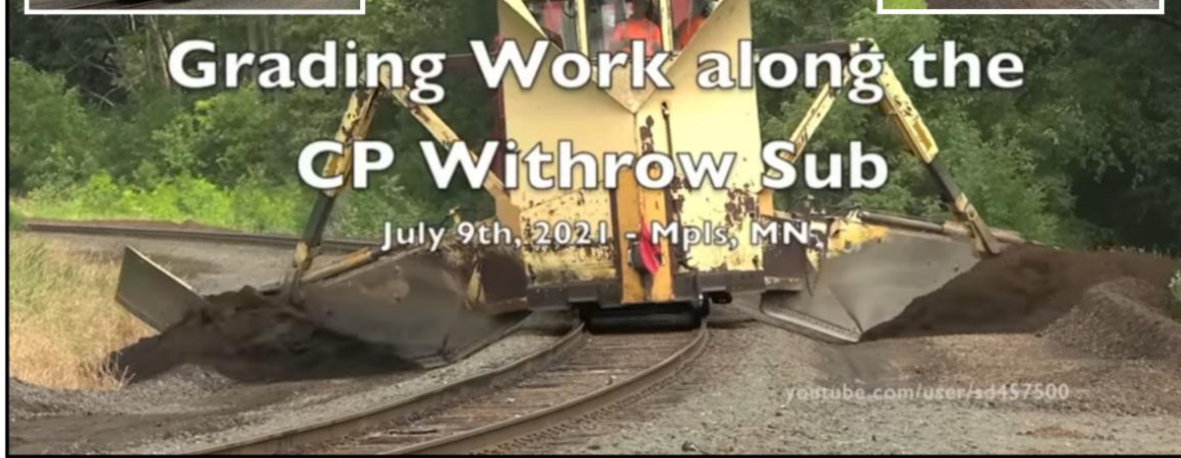
They have to keep the crossings open for the East 18th Street Team Track

Switching on a Shelf Layout

This is an HO scale industrial switching shelf layout. In this video, the Milwaukee Road transfers cars to the Des Moines Transfer Railway's East 18th street yard.

Watch a Jordan Spreader in Action





Grading Work along the CP Withrow Sub

July 9th, 2021 - Mpls, MN

youtube.com/user/ad457500

Jordan Spreader Action Grading the Roadbed

In order to keep the tracks and right of way in good order, railroads will sometimes use a Jordan Spreader to reprofile the ballast and dirt along the tracks. This plows, and pushes, the ballast to the sides so the tracks drain properly and so the track's roadbed stays in better shape longer. Seeing this type of operation is pretty rare!

We first see them working near 37th Ave NE in Minneapolis at the top of Shoreham Hill. This was the Soo Line's main back in the day and was once double tracked. Pushing the Soo spreader is a Canadian Pacific SD30C-ECO. The spreader itself is powered by a Detroit Diesel and has a distinct sound to it. After making a few passes, we head down the line to Johnson St NE. You get to see it up close as it makes a few passes. Additionally, the drone provides us with a bird's eye view, and we can see its massive hydraulic arms extended as it passes. The sheer power it takes to dig into the ground, push, and profile the Right of Way (ROW) is amazing!

Bill Scobie Sn3 Layout Tour



RGS
in
SN3

Warm weather
1940

Bill Scobie



Rio Grande Southern
Ridgeway to Durango
Colorado

Layout covers
Ridgeway to Rico
plus
Telluride Branch
Ouray Branch (D&RGW)



Placerville

Hidden
Durango
staging yard
underneath





[Bill Scobie Sn3 Layout Tour](#)

Narrow Gauge Off the Beaten Track presents a video in which Bill Scobie describes his extensive Sn3 Rio Grande Southern layout. He is assisted by Grant Knowles with questions and answers. The introduction is by Gerry Cornwell.

Pro Scale Models Presents Train Yardz! An Interview With Brian Glock, MMR[®]

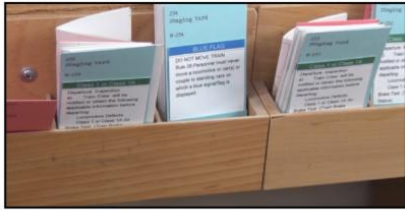


[An Interview With Brian Glock, MMR[®]](#)

In this Pro Scale Models presents: Train Yardz video - we'll see a really nice layout tour plus an interview with the layout's owner Brian Glock, MMR[®]. This is the second episode of a series that Piedmont Division (SER) member *Wayman Humpfrey* plans to continue that will have interviews with model railroaders all across Georgia, and then maybe other states to come.

Staging Yards & Tracks

IMRRO COM
Institute of Model Railroad Operations
Understanding staging in a model train layout and what it can do for your operations.
Overview & How To **Eric G. Hall**
Your Host











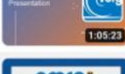



How to Use in Model Railroad Operations



[Model Railroad Operations - Staging Yards & Tracks](#)

This video will show how to use car cards & waybills for operations on a railroad model or layout. See what staging yards and tracks can do for your operations. By the way, fiddle yards are *not* the same as staging tracks, but both serve the same purpose in model railroad operations.

NMRA-X CLINICS

166		Chrizandri Roth Railfanning Namibia NMRA ORG • 298 views • 1 year ago 1:05:23	177		Ralph Renzetti Chipped Paint with Wax Paper NMRA ORG • 442 views • 1 year ago 48:48
167		David Popp Weathering Rapido's New Haven Passenger Car NMRA ORG • 676 views • 1 year ago 58:06	178		Lloyd Henchey Building the Historic Contoocook Covered Bridge NMRA ORG • 528 views • 1 year ago 49:32
168		Pete Mulvany and Tom Chalabi Remote Ops with Choo Cho Vision NMRA ORG • 397 views • 1 year ago 58:06	179		Dave Salamon Cement plant modeling NMRA ORG • 930 views • 11 months ago 54:58
169		Tony Cook U25B Engines NMRA ORG • 593 views • 1 year ago 1:05:23	180		Joey Giunto Easy and Fun Operations for Your Model Railroad NMRA ORG • 1K views • 11 months ago 1:02:14
170		NMRA Awards Night 2021 NMRA ORG • 149 views • 1 year ago 1:05:23	181		Jordan Kramer Trackside with Jordan Travels Abroad NMRA ORG • 140 views • 11 months ago 51:22
171		Dean Smith Railroader Memories Operations on the ET&WNC Vida Division NMRA ORG • 313 views • 1 year ago 59:31	182		Kevin Marks Getting started in Track Building NMRA ORG • 1.1K views • 11 months ago 1:04:08

These are but a few of the many NMRax clinics available for viewing on our YouTube Channel!

Review: Broadway Limited SW7 & NW2

N Scale Switchers w/Paragon4 DCC/Sound



[Broadway Limited N Scale SW7 & NW2 Switchers](#)

In this video, *James Wright* reviews Broadway Limited's N Scale EMD SW7 and NW2 switcher locomotives with Paragon4 DCC and Sound.

10 Obscure Railcars Explained in 10 Minutes





[10 Obscure Railcars Explained in 10 Minutes!](#)

In this video, *Southern Plains Railfan* goes over some of the lesser-known rolling stock the world has to offer. This includes the Peacemaker Rail Garrison, Santa Fe's Super Hopper, Hogshead Tobacco Cars, and much more!

How to Build Model Railroad Scenery



[How to Build Model Railroad Scenery](#)

In this video you will see how to use plaster cloth for making scenery. You will also show how to use Plaster of Paris to carve realistic rocks. Then you will see how to paint the rocks that were carved from Plaster of Paris.

Stunning N Scale Model Railroad





[Stunning N Scale Model Railroad](#)

On *Second Section Podcast*, Grant Eastman will be sharing his incredible Southern Alberta Rail N Scale layout with us. This layout breaks the norms of N-Scale, it's not just for small spaces. He will explain how N-Scale is perfect for big time railroading!!!

Grant's railroad has been featured in *Railroad Model Craftsman* and *Model Railroader*. His exceptionally detailed model railroad tells the story of how trains cross the rugged territory shrinking the gap between the west and east coasts of Canada.

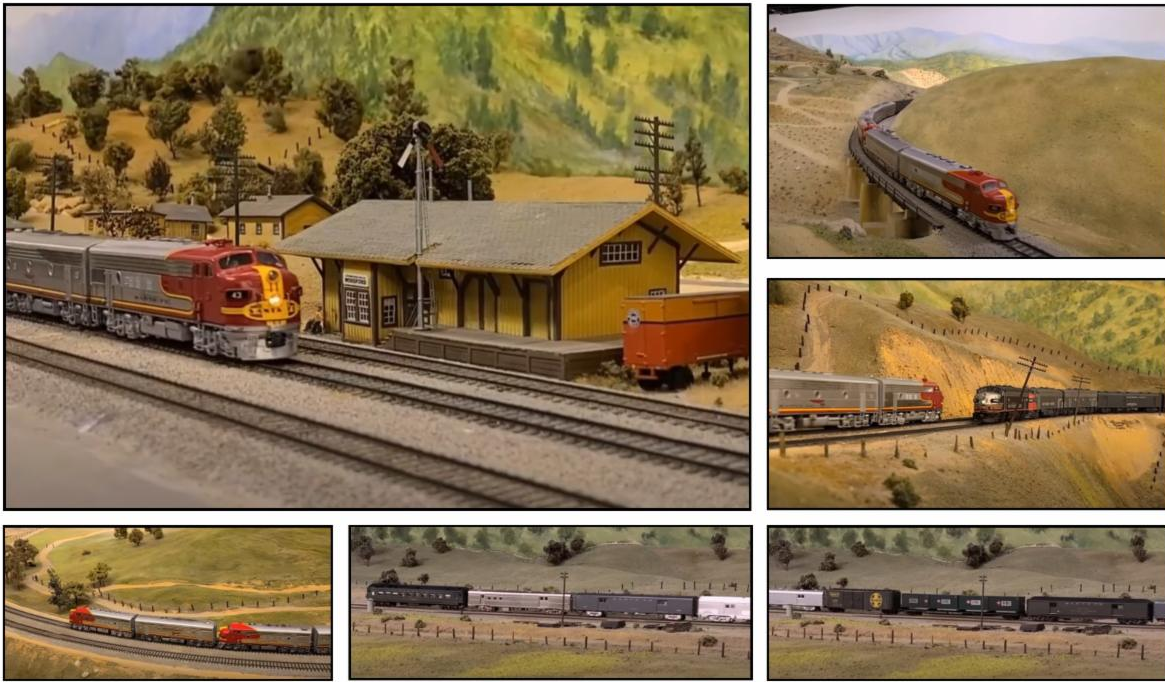
Operations - Yard Classification & Blocking



[Operations - Yard Classification & Blocking](#)

A JMRI switch list will be used to get a train put together in the yard. This is going to be a long one, so grab your popcorn and drink and enjoy!

Santa Fe Fast Mail #7 & Consist



[Santa Fe Fast Mail #7 & Consist](#)

We catch train number 7 at the west end of Cable. *Vic Yoder* decided that he would summarize the consist. It will include originating cities, handoff points, commodities, and cars interchanged from other railroads.

The north section of train 7 commences at Barstow after it splits from the portion that originated at Dearborn Station in Chicago. Train 7 was known for the scheduled run between Chicago to Los Angeles terminating at LAUPT. However, the northern section was not as familiar to most. During this era, Barstow is still a bustling place of activity. Through cars from points east destined for points north are classified by yard crews by splitting the train. As soon as both trains are assembled, power swapped (as needed), air tested, they depart for their respective West Coast destinations.

Train 7 between Barstow and Richmond was not a large train unless additional equipment was needed during peak season or additional moves were called for on behalf of the postal service, military or company need. This is a replication of what might have been a reality in 1965.

Electric Railway Clubs of Florida Annual Meet January 2022

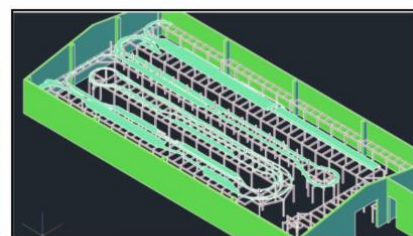
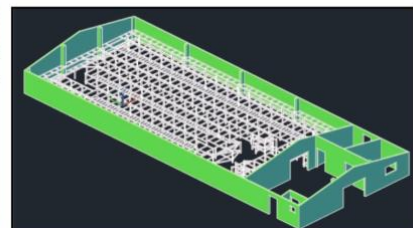
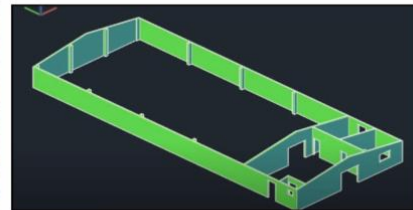




[Electric Railway Clubs of Florida](#)

Electric Railway Clubs of Florida ERCF hosted an annual meet in January 2022, at the Volusia County Fairgrounds Train Show. This video overviews the layouts featured during the show. It includes a 1/4-inch scale hand-built operating display of mostly Philadelphia Trolleys. An O scale block-controlled display, and three HO scale modular layouts.

The Layout Insanity Built - Let's Talk Sheds



[Part 1 - Let's Talk Sheds](#)

[Part 2 - Let's Talk Framing](#)

In **Part 1**, *Adam Wuiske* (Wuiske Models) runs through a brief description of how and why he built a 100 x 40 foot shed to house his model railway layout, how much it cost (roughly) and ways he reduced costs or modified

standard methods of construction to suit his needs.

In **Part 2**, *Adam* shows us how he is building the framing (benchwork) for this 80-foot x 40-foot HO Narrow Gauge layout, why he's doing it the way he is, and the costs involved.

Sydney N Scale Model Railroad Clubs Open Day



[Model Railroad Clubs Open Day](#)

In today's Model Railroad Basics video, *Reid's Train Stuff* is visiting Sydney N Scale MRCs open day at their clubrooms here in Sydney. Reid was a member for many years from 1978 until the late 80s, and he says it was great catching up with many old friends. The layouts on display were their new permanent layout the Cascade Union, which is the bottom level of a future 3-level layout, plus two of their exhibition layouts, Moosejaw Southern, Canadian-based & Widgerree, an Australian layout based on the Victorian railways.

2023 Australasian Region Convention



RAILS @ ROSEHILL

Australasian Region National Convention 2023



SAVE THE DATE

September 29—October 3, 2023

Rydges Parramatta

116-118 James Ruse Drive, Rosehill NSW 2412

Featuring clinic streams to suit the beginner, the more experienced and all modellers interested in emerging technologies.

Systems: DC / DCC / LCC Scales: O / OO / HO / N

Modelling: AU / NZ / USA / CA / UK / EU Prototype / Non-Prototype

Trade stands, layouts, advice, conversations, fellowship, partners program and layout tours!

Convention Information and Registration

Convention Information, Program Details, Newsletters and Convention Registration will progressively be added to

Friday Evening: Welcome Canapés

Saturday Day: Clinics, Consult with an MMR, Contest Judging, Partner's Program, On-Site Layouts, Traders

Saturday Evening: Convention Dinner

Sunday Day: Clinics, Bring Your Grankids, Partner's Program, On-Site Layouts, Traders

Sunday Evening: Own Program

Monday Day: Visits to local layouts

Actively participating in the greatest hobby!



2023 RAILS @ ROSEHILL

The NMRA Australasian Region is holding their 2023 Convention in Sydney, Australia, from the 29th of September through to the 3rd of October. Clinics, Layout Visits, Contest, Convention Shop are all key parts of the five-day event. Over 30 Clinics are scheduled on the Saturday and Sunday, and 35 layouts are available to choose to visit on the Friday, Monday and Tuesday.

The Clinic program consists of 45-minute clinics presented as a workshop, seminar or presentation format. Some of the Clinics are double sessions running for 1 hour 45 minutes. Clinics are pitched as 'Leaving the Station' - those new or starting their journey in the topic, 'Steaming On' - targeted to modelers well on their journey, and topics of a Prototype nature.

(Editor's Note: This website's link is slow to load and may take a few seconds longer than most, at least for me, but it really is there! PVV)

2023 NMRA National Convention

SUPERCHARGED - HIGH SPEED



TEXAS EXPRESS

AUGUST 20-26

Dallas Fort Worth TEXAS

[Stay at the Gaylord Texan Resort & Convention Center](#)

www.2023TexasExpress.com



"...and I shall go to Texas"

- said Davy Crockett (and everyone who loves trains)

Join us at the 2023 NMRA National Convention

2023 Texas Express

Everything's **BIGGER** in Texas
including this year's **2023 NMRA National Convention!**

Get inspired, learn from expert modelers, meet old friends and make new ones, go on tours, see and operate layouts, shop at the National Train Show, and enjoy the best of everything that prototype and model railroading have to offer.

Discount registration ends June 30th, and the first 900 paid registrants receive a free Scale Trains convention car!

So, y'all come down to Texas and enjoy yourself in all things railroading!!!

NMRA's Partnership Program



PARTNERSHIP PROGRAM

NMRA members can log in and click on the **Benefits** tab to view the **NMRA Partnership Program**. Please patronize all of our partners for some fantastic discounts as an NMRA member!

CatzPaw Innovations	Hot Wire Foam Factory	RR-CirKits
Clever Models, LLC	K.I.S.S Method, Inc.	Scale Model Plans
Coastmans Scenic Products	LaBelle Woodworking Co.	Scenery Solutions
Composite Designs, Inc.*	LARC Products	Showcase Miniatures
CMR Products, LLC	Logic Rail Technologies	Team Track Models
Conowingo Models	MAC Rail	The N Scale Architech
Daylight Sales (Merchandise)	Micro-Mark	The Old Depot Gallery
Deepwoods Software	Mine Mount Models	Tichy Train Group
Deluxe Materials	miniprints	Touch of the Brush Model Weathering
Digikeijs	MRC (Model Rectifier Corp)	Train Installations, LLC
Dwarvin Enterprises, Ltd	Model Train Catalogue	Train Show, Inc.
East Coast Circuits	Modelers Decals & Paint	Trainmasters TV/Model Railroad Hobbyist Store
Enterprise and National Car Rental Services	Motrak Models	TRAINZ.com
Evan Designs*	New Creations Victorian Railroad Buildings	TSG Multimedia
Feight Studios	Nick and Nora Designs	UGEARS
Fusion Scale Graphics*	Northlandz	USA Airbrush Supply/ Badger Airbrush
Gatorfoam	NScale Works by Mike Holly	WiFi Model Railroad, LLC
Great Decals!	Old West Scenery	
Green Frog Productions	Ram Track	

[**New Partners in RED***]

May 2023

Partnership Program

The NMRA Partnership Program is a member benefit that truly has a tangible payback. We've partnered with model railroad manufacturers of all sizes, giving them exposure on our website in return for receiving generous discounts for NMRA members all year long. Some provide members with special codes, others prefer a phone or email order, but all appreciate the additional business from our members. And of course, our

members appreciate the extra savings...savings that can actually pay the cost of NMRA membership! **Be sure to check back often as new Partners are being added all the time.**

One of our newest Partners this Month is Fusion Scale Graphics!

Fusion Scale Graphics uses the greatest design tool on the market today, Adobe Illustrator. All of their graphics are 100% vector graphics, that's right, no images are used at all. They draw all graphics by hand here in our shop to ensure all of their decals will print clean and crisply each and every time; no matter what scale you need. Fusion Scale Graphics uses today's latest and greatest printing equipment. This allows them to print not only color but WHITE. Yes, you read that correctly, they can print white. They also print at a stunning 1200 dpi, that's 1200 little dots of ink in one single inch. This allows them to print a beautiful array of colors, gradients, fine graphics, and lettering down to just under half a millimeter. Fusion Scale Graphics offers a growing selection of hobby decals.

NMRA@Home



Planting Tall Grass

Featured in the Division Business Car Column appearing in the June 2023 issue of NMRA Magazine.

If you are looking to install tall grass on your layout, Jim Osborn, MMR®, shows you how to build a small tool to accomplish the task. His article appeared in *The Semaphore*, the newsletter of the

Midwest Region's Fox Valley Division.

Troels Kirk's On30 Coast Line Railroad

Featured in the Division Business Car Column appearing in the June 2023 issue of NMRA Magazine.



Take a virtual layout tour of Troels Kirk's On30 Coast Line Railroad. His magnificent layout was featured in the *Crossties*, the newsletter of the Mid-Eastern Region's James River Division. Troels is a fine-art painter that has applied his skills to his layout depicting a New England seaside fishing village around 1900.



Controlling a Turntable with an Arduino

Featured in the Division Business Car Column appearing in the June 2023 issue of NMRA Magazine.

You have probably seen many applications of an Arduino, a small microcomputer. But have you seen one used to control and index a turntable? Richard Louvet shows you how you can build your own in a 3-part article that appeared in *The Derailed*, the newsletter of the 100% NMRA San

Jacinto Model Railroad Club.

The ***Division Business Car*** column appears in even-numbered months in NMRA Magazine. It's loaded with great modeling ideas, plus useful information that can help make your Division, Region, or 100% NMRA

Club even better. The information comes from articles published in Region, Division, and club newsletters. The best of these articles are posted on the NMRA website. You can read the entire archive, from as far back as 2011 right up to the latest posting, by clicking [here](#).

Previous issues of the **NMRA Turntable** are available on the Turntable Archives page. You must first log in as a member at: nmra.org After you are in the members-only section, then you must hover over 'Publications' on the menu bar, then 'NMRA Turntable', and then click on one of the list of back issues.

Editor: [Paul Voelker, HLM](#)

Executive Editor: [Rick Coble](#)

The NMRA Turntable is an official monthly production of the National Model Railroad Association, Inc. Publishing Department ([Riley Triggs](#) Manager). Its purpose is to introduce NMRA members to a selection of instructional videos and online publications that they may find of interest. If you know of an NMRA member who is not receiving this mailing, please direct them to [here](#) to update their email address. If you no longer wish to receive these mailings, please don't mark them as SPAM. Instead, click the Safe Unsubscribe link at the bottom of this page. ©2021 National Model Railroad Association, Inc., P.O. Box 1328, Soddy Daisy TN 37384.